

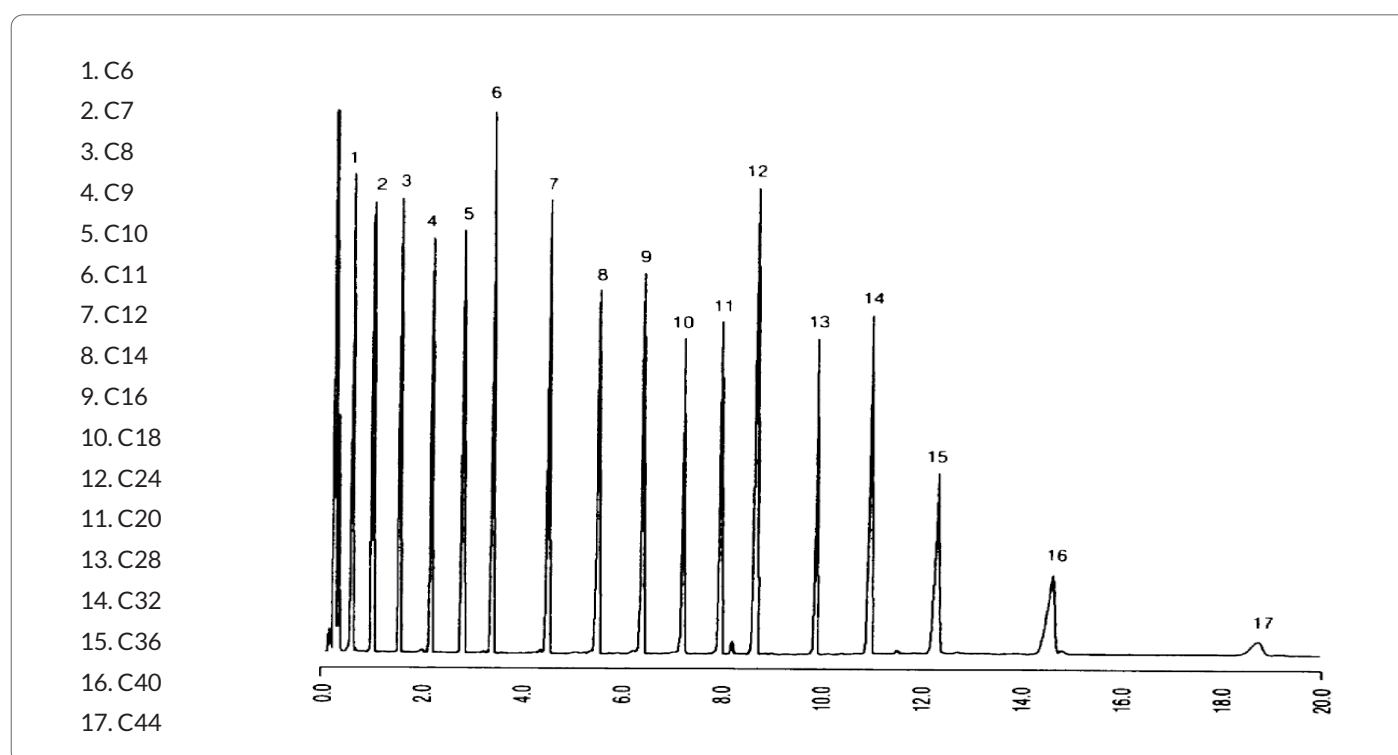
GC Capillary Column Applications: Petrochemical



Sim Dis - ASTM 2887

Column	007-1, Dimethylpolysiloxane 10M. x 0.53 mm I.D. X 1.0 µm film
Part No.	CH-100018
Temperature	35° (25°/min.) - 320°C

Injector	350°C
Detector	350°C, FID
Carrier Gas	20 ml/min., Helium



SHOP NOW

Visit our website at
[afplifsciences.com](https://www.afplifsciences.com)