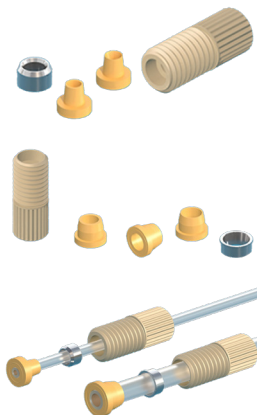


Liquid Handling Fittings and Tubing

PEEK Fittings

PEEK Flangeless Fittings



Description	Tubing Size (mm)	Part Number
PEEK Flangeless Fittings 016-F, OD 1.6 mm, Set	OD 1.6mm	CC-100227
PEEK Flangeless Fittings 020-F, OD 2.0 mm, Set	OD 2.0mm	CC-100228
PEEK Flangeless Fittings 025-F, OD 2.5 mm, Set	OD 2.5mm	CC-100229
PEEK Flangeless Fittings 030-F, OD 3.0 mm, Set	OD 3.0mm	CC-100230
PEEK Flangeless Fittings 032-F, OD 3.2 mm, Set	OD 3.2mm	CC-100231
PEEK Flangeless Fittings 016F, OD 1.6 mm, Set	OD 1.6mm	CC-100232
PEEK Flangeless Fittings 020F, OD 2.0 mm, Set	OD 2.0mm	CC-100233
PEEK Flangeless Fittings 025F, OD 2.5 mm, Set	OD 2.5mm	CC-100234
PEEK Flangeless Fittings 030F, OD 3.0 mm, Set	OD 3.0mm	CC-100235
PEEK Flangeless Fittings 032F, OD 3.2 mm, Set	OD 3.2mm	CC-100236


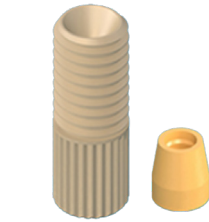
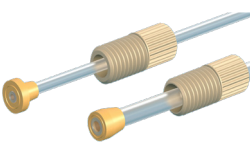



SHOP NOW

Visit our website at afproducts.ca

PEEK Fittings

PEEK Flangeless Fittings

	Description	Tubing Size (mm)	Part Number
	PEEK Flangeless Fittings WP08B 032F, OD 3.2mm, Set	OD 3.2mm	CC-100237
	PEEK Flangeless Fittings WP08B 030F, OD 3.0mm, Set	OD 3.0mm	CC-100238
	PEEK Flangeless Fittings WF08B 025F, OD 2.5mm, Set	OD 2.5mm	CC-100239
	PEEK Flangeless Fittings WF09B 020F, OD 2.0mm, Set	OD 2.0mm	CC-100240
	PEEK Flangeless Fittings WF09B 016F, OD 1.6mm, Set	OD 1.6mm	CC-100241
	PEEK Flangeless Fittings WF07B 016F, OD 1.6mm, Set	OD 1.6mm	CC-100242
	PEEK Flangeless Fittings WF07B 020F, OD 2.0mm, Set	OD 2.0mm	CC-100243
	PEEK Flangeless Fittings WF07B 025F, OD 2.5mm, Set	OD 2.5mm	CC-100244
	PEEK Flangeless Fittings WF07B 030F, OD 3.0mm, Set	OD 3.0mm	CC-100245
	PEEK Flangeless Fittings WF07B 032F, OD 3.2mm, Set	OD 3.2mm	CC-100246
	PEEK Flangeless Fittings WF09B-M6K 016F, OD 1.6mm, Set	OD 1.6mm	CC-100247
	PEEK Flangeless Fittings WF09B-M6K 020F, OD 2.0mm, Set	OD 2.0mm	CC-100248
	PEEK Flangeless Fittings WP08B-M6K 025F, OD 2.5mm, Set	OD 2.5mm	CC-100249
	PEEK Flangeless Fittings WP08B-M6K 030F, OD 3.0mm, Set	OD 3.0mm	CC-100250
	PEEK Flangeless Fittings WP08B-M6K 032F, OD 3.2mm, Set	OD 3.2mm	CC-100251
	PEEK Flangeless Fittings WD03B 025F, OD 2.5mm, Set	OD 2.5mm	CC-100252
	PEEK Flangeless Fittings WD03B 030F, OD 3.0mm, Set	OD 3.0mm	CC-100253
	PEEK Flangeless Fittings WD03B 032F, OD 3.2mm, Set	OD 3.2mm	CC-100254
	PEEK Flangeless Fittings WD03B-M6K 025F, OD 2.5mm, Set	OD 2.5mm	CC-100255
	PEEK Flangeless Fittings WD03B-M6K 030F, OD 3.0mm, Set	OD 3.0mm	CC-100256
	PEEK Flangeless Fittings WD03B-M6K 032F, OD 3.2mm, Set	OD 3.2mm	CC-100257
	PEEK Flangeless Fittings WP07B-M6K 025F, OD 2.5mm, Set	OD 2.5mm	CC-100258
	PEEK Flangeless Fittings WP07B-M6K 030F, OD 3.0mm, Set	OD 3.0mm	CC-100259
	PEEK Flangeless Fittings WP07B-M6K 032F, OD 3.2mm, Set	OD 3.2mm	CC-100260
	PEEK Flangeless Fittings WP07B-M6K 016F, OD 1.6mm, Set	OD 1.6mm	CC-100261
	PEEK Flangeless Fittings WP07B-M6K 020F, OD 2.0mm, Set	OD 2.0mm	CC-100262
	PEEK Flangeless Fittings WF03B 016F, OD 1.6mm, Set	OD 1.6mm	CC-100263
	PEEK Flangeless Fittings WF03B 020F, OD 2.0mm, Set	OD 2.0mm	CC-100264
	PEEK Flangeless Fittings WD06B 064F, OD 6.4mm, Set	OD 6.4mm	CC-100265
	PEEK One-Piece Hand Tight Joint 11A, OD 1.6mm, PC	OD 1.6mm	CC-100266
PEEK One-Piece Fitting 11C, OD 1.6mm, PC	OD 1.6mm	CC-100267	
PEEK One-Piece Fitting 11E, OD 1.6mm, PC	OD 1.6mm	CC-100268	
PEEK One-Piece Fitting 11G, OD 1.6mm, PC	OD 1.6mm	CC-100269	

Threaded Fittings

Flangeless Fittings



Description	Tubing Size (mm)	Part Number
Polypropylene Flangeless Fittings, OD 1.6/2.0, Piece	OD 1.6/2.0	CC-100193
PTFE Flangeless Fittings, OD 1.6/2.0, Piece	OD 1.6/2.0	CC-100194
Polypropylene Flangeless Fittings M6, OD 1.6/2.0, Piece	OD 1.6/2.0	CC-100195
PTFE Flangeless Fittings M6, OD 1.6/2.0, Piece	OD 1.6/2.0	CC-100196
Polypropylene Two-set Flangeless Fittings 32P, OD 2.5/3.0/3.2, Set	OD 2.5/3.0/3.2	CC-100197
Polypropylene Two-set Flangeless Fittings 30P, OD 2.5/3.0/3.2, Set	OD 2.5/3.0/3.2	CC-100198
Polypropylene Two-set Flangeless Fittings 28P, OD 2.5/3.0/3.2, Set	OD 2.5/3.0/3.2	CC-100199
Polypropylene Two-set Flangeless Fittings 20P, OD 1.6/2.0, Set	OD 1.6/2.0	CC-100200
Polypropylene Two-set Flangeless Fittings 16P, OD 1.6/2.0, Set	OD 1.6/2.0	CC-100201
PTFE/PFA Two-set Flangeless Fittings 32A, OD 2.5/3.0/3.2, Set	OD 2.5/3.0/3.2	CC-100202
PTFE/PFA Two-set Flangeless Fittings 30A, OD 2.5/3.0/3.2, Set	OD 2.5/3.0/3.2	CC-100203
PTFE/PFA Two-set Flangeless Fittings 25A, OD 2.5/3.0/3.2, Set	OD 2.5/3.0/3.2	CC-100204
PTFE/PFA Two-set Flangeless Fittings 20A, OD 1.6/2.0, Set	OD 1.6/2.0	CC-100205
PTFE/PFA Two-set Flangeless Fittings 16A, OD 1.6/2.0, Set	OD 1.6/2.0	CC-100206



Flangeless Ferrules



Polypropylene Flangeless Ferrule, OD 3.2, Piece	OD 3.2	CC-100207
Polypropylene Flangeless Ferrule, OD 3.0, Piece	OD 3.0	CC-100208
Polypropylene Flangeless Ferrule, OD 2.5, Piece	OD 2.5	CC-100209
PFA Flangeless Ferrule, OD 2.5, Piece	OD 2.5	CC-100210
PFA Flangeless Ferrule, OD 3.0, Piece	OD 3.0	CC-100211
PFA Flangeless Ferrule, OD 3.2, Piece	OD 3.2	CC-100212

Flangeless Ferrules



Description	Tubing Size (mm)	Part Number
Polypropylene Flangeless Ferrule, OD 1.6, Piece	OD 1.6	CC-100213
PTFE Flangeless Ferrule, OD 1.6, Piece	OD 1.6	CC-100214
Polypropylene Flangeless Ferrule, OD 2.0, Piece	OD 2.0	CC-100215
PTFE Flangeless Ferrule, OD 2.0, Piece	OD 2.0	CC-100216

Female Unions



Polypropylene Female Union 28P, Piece		CC-100217
PTFE Female Union 28E, Piece		CC-100218

Female T Adapters



Polypropylene Female T Adapter 28P, Piece		CC-100219
PTFE Female T Adapter 28E, Piece		CC-100220

Female Y Adapters



Polypropylene Female Y Adapter 28P, Piece		CC-100221
PTFE Female Y Adapter 28E, Piece		CC-100222

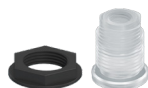
Threaded Fittings

Female Cross Adapters



Polypropylene Female Cross Adapter 28P, Piece		CC-100223
PTFE Female Cross Adapter 28E, Piece		CC-100224

Female Cross Adapters



Polypropylene/PPS Threaded Bulkhead Union 28P, Set		CC-100225
Polypropylene/PTFE Threaded Bulkhead Union 28E, Set		CC-100226

Barbed and Luer Fittings

Equal Unions



Description	Tubing Size (mm)	Part Number
Polypropylene Equal Union, ID 1.0-1.6, Piece	ID 1.0-1.6	CC-100099
Polypropylene Equal Union, ID 1.6-2.4, Piece	ID 1.6-2.4	CC-100100
Polypropylene Equal Union, ID 2.4-3.2, Piece	ID 2.4-3.2	CC-100101
Polypropylene Equal Union, ID 3.2-4.0, Piece	ID 3.2-4.0	CC-100102
Polypropylene Equal Union, ID 4.0-4.8, Piece	ID 4.0-4.8	CC-100103
Polypropylene Equal Union, ID 4.8-6.4, Piece	ID 4.8-6.4	CC-100104
Polypropylene Equal Union, ID 6.4-8.7, Piece	ID 6.4-8.7	CC-100105
Polypropylene Equal Union, ID 8.7-9.5, Piece	ID 8.7-9.5	CC-100106
Polypropylene Equal Union, ID 9.5-12.7, Piece	ID 9.5-12.7	CC-100107

Reducing Unions



Polypropylene Reducing Union, ID (1.0-1.6)*(1.6-2.4), Piece	ID (1.0-1.6)*(1.6-2.4)	CC-100108
Polypropylene Reducing Union, ID (1.0-1.6)*(2.4-3.2), Piece	ID (1.0-1.6)*(2.4-3.2)	CC-100109
Polypropylene Reducing Union, ID (1.6-2.4)*(2.4-3.2), Piece	ID (1.6-2.4)*(2.4-3.2)	CC-100110
Polypropylene Reducing Union, ID (1.6-2.4)*(3.2-4.0), Piece	ID (1.6-2.4)*(3.2-4.0)	CC-100111
Polypropylene Reducing Union, ID (2.4-3.2)*(3.2-4.0), Piece	ID (2.4-3.2)*(3.2-4.0)	CC-100112
Polypropylene Reducing Union, ID (2.4-3.2)*(4.0-4.8), Piece	ID (2.4-3.2)*(4.0-4.8)	CC-100113
Polypropylene Reducing Union, ID (3.2-4.0)*(4.0-4.8), Piece	ID (3.2-4.0)*(4.0-4.8)	CC-100114
Polypropylene Reducing Union, ID (3.2-4.0)*(4.8-6.4), Piece	ID (3.2-4.0)*(4.8-6.4)	CC-100115
Polypropylene Reducing Union, ID (4.0-4.8)*(4.8-6.4), Piece	ID (4.0-4.8)*(4.8-6.4)	CC-100116
Polypropylene Reducing Union, ID (4.0-4.8)*(6.4-8.7), Piece	ID (4.0-4.8)*(6.4-8.7)	CC-100117
Polypropylene Reducing Union, ID (4.8-6.4)*(6.4-8.7), Piece	ID (4.8-6.4)*(6.4-8.7)	CC-100118
Polypropylene Reducing Union, ID (8.7-9.5)*(9.5-12.7), Piece	ID (8.7-9.5)*(9.5-12.7)	CC-100119

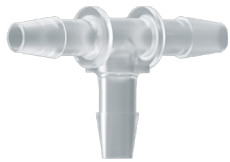
Barbed and Luer Fittings

Equal Elbow Barbed Unions



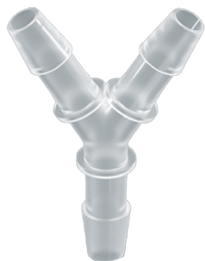
Description	Tubing Size (mm)	Part Number
Polypropylene Equal Elbow Barbed Union, ID 1.0-1.6, Piece	ID 1.0-1.6	CC-100120
Polypropylene Equal Elbow Barbed Union, ID 1.6-2.4, Piece	ID 1.6-2.4	CC-100121
Polypropylene Equal Elbow Barbed Union, ID 2.4-3.2, Piece	ID 2.4-3.2	CC-100122
Polypropylene Equal Elbow Barbed Union, ID 4.0-4.8, Piece	ID 4.0-4.8	CC-100123
Polypropylene Equal Elbow Barbed Union, ID 3.2-4.0, Piece	ID 3.2-4.0	CC-100124
Polypropylene Equal Elbow Barbed Union, ID 4.8-6.4, Piece	ID 4.8-6.4	CC-100125
Polypropylene Equal Elbow Barbed Union, ID 6.4-8.7, Piece	ID 6.4-8.7	CC-100126
Polypropylene Equal Elbow Barbed Union, ID 8.7-9.5, Piece	ID 8.7-9.5	CC-100127
Polypropylene Equal Elbow Barbed Union, ID 9.5-12.7, Piece	ID 9.5-12.7	CC-100128

T Adapters



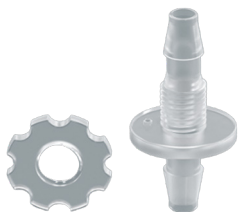
Polypropylene T Adapter, ID 0.8-1.6, Piece	ID 0.8-1.6	CC-100129
Polypropylene T Adapter, ID 1.6-2.0, Piece	ID 1.6-2.0	CC-100130
Polypropylene T Adapter, ID 2.0-2.4, Piece	ID 2.0-2.4	CC-100131
Polypropylene T Adapter, ID 2.4-3.2, Piece	ID 2.4-3.2	CC-100132
Polypropylene T Adapter, ID 3.2-4.0, Piece	ID 3.2-4.0	CC-100133
Polypropylene T Adapter, ID 4.0-4.8, Piece	ID 4.0-4.8	CC-100134
Polypropylene T Adapter, ID 4.8-6.4, Piece	ID 4.8-6.4	CC-100135
Polypropylene T Adapter, ID 6.4-8.7, Piece	ID 6.4-8.7	CC-100136
Polypropylene T Adapter, ID 8.7-9.5, Piece	ID 8.7-9.5	CC-100137
Polypropylene T Adapter, ID 9.5-12.7, Piece	ID 9.5-12.7	CC-100138

Y Adapters



Polypropylene Y Adapter, ID 0.8-1.6, Piece	ID 0.8-1.6	CC-100139
Polypropylene Y Adapter, ID 1.6-2.0, Piece	ID 1.6-2.0	CC-100140
Polypropylene Y Adapter, ID 2.0-2.4, Piece	ID 2.0-2.4	CC-100141
Polypropylene Y Adapter, ID 2.4-3.2, Piece	ID 2.4-3.2	CC-100142
Polypropylene Y Adapter, ID 3.2-4.0, Piece	ID 3.2-4.0	CC-100143
Polypropylene Y Adapter, ID 4.0-4.8, Piece	ID 4.0-4.8	CC-100144
Polypropylene Y Adapter, ID 4.8-6.4, Piece	ID 4.8-6.4	CC-100145
Polypropylene Y Adapter, ID 6.4-8.7, Piece	ID 6.4-8.7	CC-100146
Polypropylene Y Adapter, ID 8.7-9.5, Piece	ID 8.7-9.5	CC-100147
Polypropylene Y Adapter, ID 9.5-12.7, Piece	ID 9.5-12.7	CC-100148

Equal Barbed Bulkhead Unions



Polypropylene Equal Barbed Bulkhead Union, ID 1.0-1.6, Set	ID 1.0-1.6	CC-100149
Polypropylene Equal Barbed Bulkhead Union, ID 1.6-2.4, Set	ID 1.6-2.4	CC-100150
Polypropylene Equal Barbed Bulkhead Union, ID 2.4-3.2, Set	ID 2.4-3.2	CC-100151
Polypropylene Equal Barbed Bulkhead Union, ID 3.2-4.0, Set	ID 3.2-4.0	CC-100152
Polypropylene Equal Barbed Bulkhead Union, ID 4.0-4.8, Set	ID 4.0-4.8	CC-100153
Polypropylene Equal Barbed Bulkhead Union, ID 4.8-6.4, Set	ID 4.8-6.4	CC-100154
Polypropylene Equal Barbed Bulkhead Union, ID 6.4-8.7, Set	ID 6.4-8.7	CC-100155

Barb-to-Thread Fittings

Barbed to Female Adapters



Description	Tubing Size (mm)	Part Number
Polypropylene Barb-to-Female Adapter, ID 1.0-1.6, Piece	ID 1.0-1.6	CC-100168
PTFE Barb-to-Female Adapter, ID 1.0-1.6, Piece	ID 1.0-1.6	CC-100169
Polypropylene Barb-to-Female Adapter, ID 1.6-2.4, Piece	ID 1.6-2.4	CC-100170
PTFE Barb-to-Female Adapter, ID 1.6-2.4, Piece	ID 1.6-2.4	CC-100171
Polypropylene Barb-to-Female Adapter, ID 2.4-3.2, Piece	ID 2.4-3.2	CC-100172
PTFE Barb-to-Female Adapter, ID 2.4-3.2, Piece	ID 2.4-3.2	CC-100173
Polypropylene Barb-to-Female Adapter, ID 3.2-4.0, Piece	ID 3.2-4.0	CC-100174
PTFE Barb-to-Female Adapter, ID 3.2-4.0, Piece	ID 3.2-4.0	CC-100175

Male Unions



Polypropylene Male Union, ID 1.0-1.6, Piece	ID 1.0-1.6	CC-100176
Polypropylene Male Union, ID 1.6-2.4, Piece	ID 1.6-2.4	CC-100177
Polypropylene Male Union, ID 2.4-3.2, Piece	ID 2.4-3.2	CC-100178
Polypropylene Male Union, ID 3.2-4.0, Piece	ID 3.2-4.0	CC-100179
Polypropylene Male Union, ID 4.0-4.8, Piece	ID 4.0-4.8	CC-100180
Polypropylene Male Union, ID 4.8-6.4, Piece	ID 4.8-6.4	CC-100181
Polypropylene Male Union, ID 6.4-8.7, Piece	ID 6.4-8.7	CC-100182

Male Unions



Description	Tubing Size (mm)	Part Number
Polypropylene Male Union Long, ID 1.0-1.6, Piece	ID 1.0-1.6	CC-100183
Polypropylene Male Union Long, ID 1.6-2.4, Piece	ID 1.6-2.4	CC-100184
Polypropylene Male Union Long, ID 2.4-3.2, Piece	ID 2.4-3.2	CC-100185
Polypropylene Male Union Long, ID 3.2-4.0, Piece	ID 3.2-4.0	CC-100186
Polypropylene Male Union Long, ID 4.0-4.8, Piece	ID 4.0-4.8	CC-100187
PTFE Male Union Long, ID 1.0-1.6, Piece	ID 1.0-1.6	CC-100188
PTFE Male Union Long, ID 1.6-2.4, Piece	ID 1.6-2.4	CC-100189
PTFE Male Union Long, ID 2.4-3.2, Piece	ID 2.4-3.2	CC-100190
PTFE Male Union Long, ID 3.2-4.0, Piece	ID 3.2-4.0	CC-100191
PTFE Male Union Long, ID 4.0-4.8, Piece	ID 4.0-4.8	CC-100192

Tubing

FEP Teflon Tubing



Description	Part Number
FEP Teflon Tube, 0.8*1.6 mm, 1.6 Thickness, Per Meter	CT-100060
FEP Teflon Tube, 1*2 mm, 0.5 Thickness, Per Meter	CT-100061
FEP Teflon Tube, 1.5 mm*2.5, 0.5 Thickness, Per Meter	CT-100062
FEP Teflon Tube, 2*3 mm, 0.5 Thickness, Per Meter	CT-100063
FEP Teflon Tube, 2.175*3.175 mm, 0.5 Thickness, Per Meter	CT-100064
FEP Teflon Tube, 1.6*3.175 mm, 0.7875 Thickness, Per Meter	CT-100065
FEP Teflon Tube, 1.6*3.2 mm, 0.8 Thickness, Per Meter	CT-100066
FEP Teflon Tube, 2.65*4 mm, 0.675 Thickness, Per Meter	CT-100067
FEP Teflon Tube, 1.2*3 mm, 0.9 Thickness, Per Meter	CT-100068
FEP Teflon Tube, $\Phi 2^* \Phi 4$, 1 Thickness, Per Meter	CT-100069
FEP Teflon Tube, $\Phi 3^* \Phi 4$, 0.5 Thickness, Per Meter	CT-100070
FEP Teflon Tube, 0.5*1.6 mm, 0.55 Thickness, Per Meter	CT-100071
FEP Teflon Tube, $\Phi 4.35^* \Phi 6.35$, 1 Thickness, Per Meter	CT-100072
FEP Teflon Tube, $\Phi 1^* \Phi 1.6$, 0.3 Thickness, Per Meter	CT-100073
FEP Teflon Tube, $\Phi 6^* \Phi 8$, Per Meter, 1 Thickness, Per Meter	CT-100074
FEP Teflon Tube, $\Phi 4^* \Phi 6$, Per Meter, 1 Thickness, Per Meter	CT-100075
FEP Teflon Tube, $\Phi 3.2^* \Phi 4.8$, 0.8 Thickness, Per Meter	CT-100076

PTFE Teflon Tubing



PTFE Teflon Tube, $\Phi 1^* \Phi 2$, 0.5 Thickness, Per Meter	CT-100077
PTFE Teflon Tube, $\Phi 3^* \Phi 4$, 0.5 Thickness, Per Meter	CT-100078
PTFE Teflon Tube, 1.6*3.2, 0.8 Thickness, Per Meter	CT-100079
PTFE Teflon Tube, 0.8*1.6, 0.4 Thickness, Per Meter	CT-100080
PTFE Teflon Tube, 2.175*3.175, 0.5 Thickness, Per Meter	CT-100081
PTFE Teflon Tube, 1.5*2.5, 0.5 Thickness, Per Meter	CT-100082
PTFE Teflon Tube, 2*3, 0.5 Thickness, Per Meter	CT-100083
PTFE Teflon Tube, $\Phi 4.35^* \Phi 6.35$, 1 Thickness, Per Meter	CT-100084
PTFE Teflon Tube, $\Phi 4^* \Phi 6$, 1 Thickness, Per Meter	CT-100085
PTFE Teflon Tube, $\Phi 2^* \Phi 4$, 1 Thickness, Per Meter	CT-100086
PTFE Teflon Tube, $\Phi 5^* \Phi 8$, 1 Thickness, Per Meter	CT-100087
PTFE Teflon Tube, $\Phi 3.2^* \Phi 4.8$, 0.8 Thickness, Per Meter	CT-100088

Tubing

Silicone Tubing



Description	Part Number
Silicone Tube for Peristaltic Head, 1*3 mm, 1 Thickness, Per Meter	CT-100089
Silicone Tube for Peristaltic Head, 2*4 mm, 1 Thickness, Per Meter	CT-100090
Silicone Tube for Peristaltic Head, 3*5 mm, 1 Thickness, Per Meter	CT-100091
Silicone Tube for Peristaltic Head, 1.5*3 mm, 0.75 Thickness, Per Meter	CT-100092
Silicone Tube for Peristaltic Head, 1.6*4.8 mm, 1.6 Thickness, Per Meter	CT-100093
Silicone Tube for Peristaltic Head, 3.2*6.4 mm, 1.6 Thickness, Per Meter	CT-100094
Silicone Tube for Peristaltic Head, 6.4*9.6 mm, 1.6 Thickness, Per Meter	CT-100095
Silicone Tube for Peristaltic Head, 7.9*11.1 mm, 1.6 Thickness, Per Meter	CT-100096
Silicone Tube for Peristaltic Head, 2.4*5.6 mm, 1.6 Thickness, Per Meter	CT-100097
Silicone Tube for Peristaltic Head, 6.4*11.4 mm, 2.5 Thickness, Per Meter	CT-100098
Silicone Tube for Peristaltic Head, 4.8*9.8 mm, 2.5 Thickness, Per Meter	CT-100099

Pharmed Rubber Tubing



Pharmed Rubber Tube, 1.6*4.8 mm, 1.6 Thickness, Per Meter	CT-100100
Pharmed Rubber Tube, 4.8*8 mm, 1.6 Thickness, Per Meter	CT-100101
Pharmed Rubber Tube, 1.14*2.74 mm, 0.8 Thickness, Per Meter	CT-100102
Pharmed Rubber Tube, 3.2*6.4 mm, 1.6 Thickness, Per Meter	CT-100103
Pharmed Rubber Tube, 4.8*9.8 mm, 2.5 Thickness, Per Meter	CT-100104
Pharmed Rubber Tube, 0.8*4.0 mm, 1.6 Thickness, Per Meter	CT-100105
Pharmed Rubber Tube, 6.4*9.6 mm, 1.6 Thickness, Per Meter	CT-100106
Pharmed Rubber Tube, 2.4*5.6 mm, 1.6 Thickness, Per Meter	CT-100107
Pharmed Rubber Tube, 2.06*3.66 mm, 0.8 Thickness, Per Meter	CT-100108

Wrenches

Hand Twist Tool



Description	Part Number
SST Hand Twist Tooling for Fittings SNGZ-YX, Piece	CA-100009